



budaörsi latinovits színház

VÁROSI IFJUSÁGI KLUB TECHNICAL SPECIFICATIONS

Contacts:

Technical director: Bachraty Gábor
bachraty.gabor@latinovitsszinhaz.eu
Tel: 06-20-4246862

Production manager: Sokorai Attila
attila.sokorai@gmail.com
Tel: 06-70-1987198

Stage manager: Gémes Gréta
gemesgretaa@gmail.com
Tel: 06-20-4849866

Head of Lighting: Sziebert Sebestyén
sziebert.sebestyen@gmail.com
Tel: 06-70-3543732

Head of sound: Pellei Milán
pellei.milan@gmail.com
Tel: 06-70-5937090

SketchUp Model:

<https://3dwarehouse.sketchup.com/model/a938cb77-5151-40f8-9e23-e87c243ba778/Buda%C3%B6rs-K%C3%A1roly-kir%C3%A1ly-u-3-2040>

Scan the QR code to view a model of the theater hall, complete with accurate dimensions.



Stage dimensions:

- Depth: 5m
- Width: 6,8m
- Stage Height 3,8m
- Floor height from auditorium floor: 0,8m
- Proscenium opening: 5,5m x 3,5m

Stage, seating, dressing rooms:

- The stage is drillable
- The entrance to the stage is from stage right with 4 stairs
- Green front curtain downstage, hand-operated, opens to side
- auditorium seating is flat, 70 seats
- Co-educated dressing room with 2 tables, mirrors, and a small sofa
- Dressing room can be separated with a movable screen

Flying positions in theater hall:

Above the stage there is a pipe grid with a distributed load capacity of 50kg / pipe.
Above the auditorium there are 2 aluminium trusses. Each with a distributed load capacity of 200kg

Loading door:

1,5m x 2m door in front of the stage on the right

Lighting equipment:

- 6x selecon pc 600w
- 2x selecon zoom profile 600w
- 2x PC 1kw
- 2x Fresnel 1kw
- 2x ADB 1kw profile
- 8x Ignition studio led par

Dimmers:

- 1x LOGAN 12ch dimmer
- 2x 4 channel dimmer pack

Lighting desk:

GrandMA2 OnPC

Default lighting positions can be found at the end of the document at the photos.

Sound equipment:

- 2x EAW passive speakers (PA)
- 2x Yamaha Sub
- 2x EAW passive monitor speakers

Wireless system:

- 2x Sennheiser wireless handheld microphones
- 2x Sennheiser G3 wireless beltpack with MKE2 capsule
- 2x Sennheiser G3 Receiver

Microphones:

- SM57

Mixing desk:

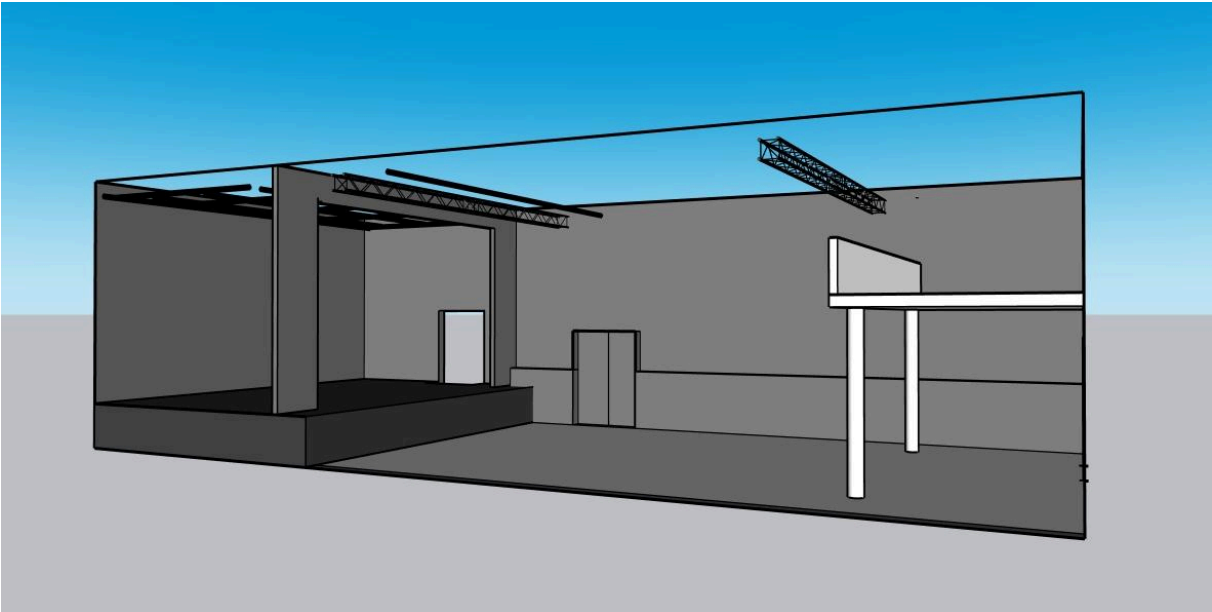
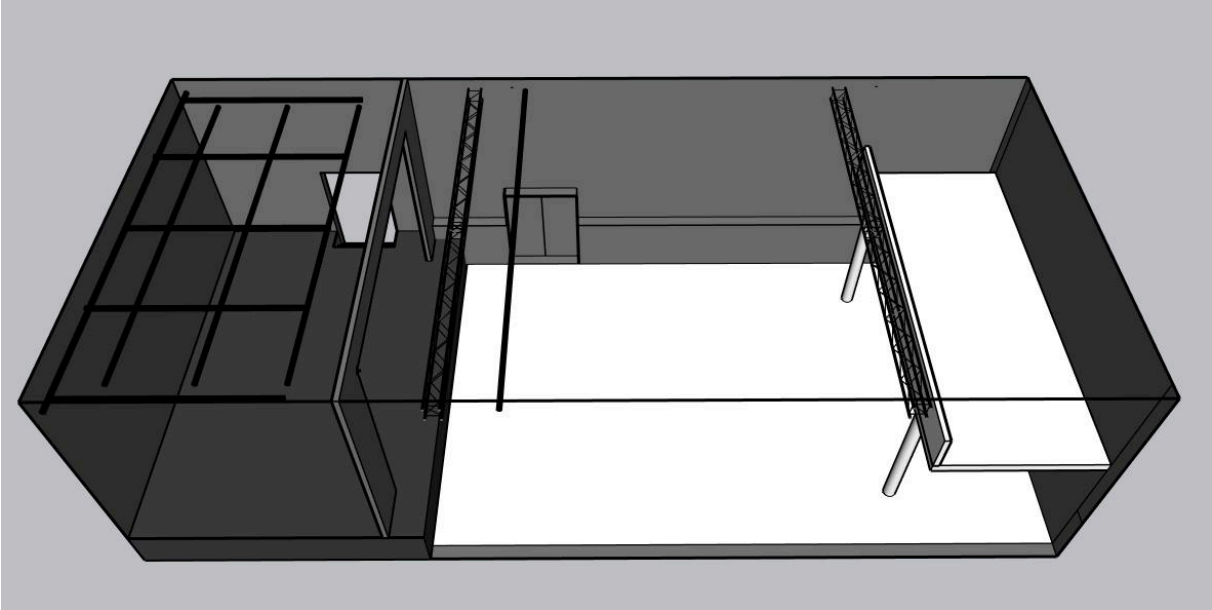
- A&H Qu16
- Analogue stage-box on stage (16in 16out)
- Macbook Pro, with Qlab 4

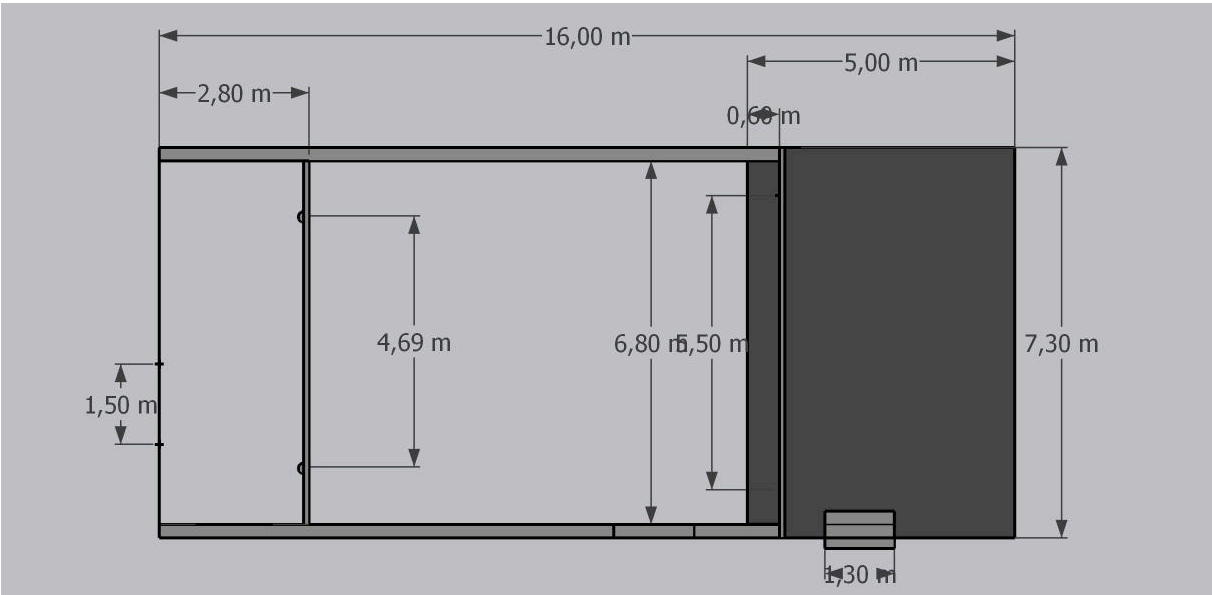
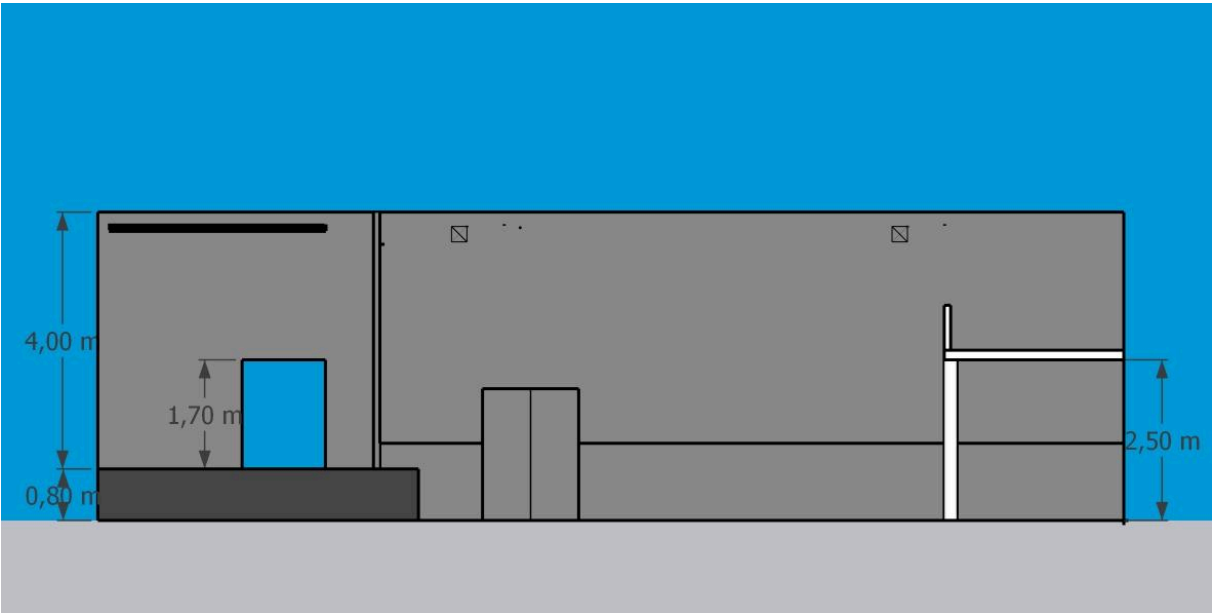
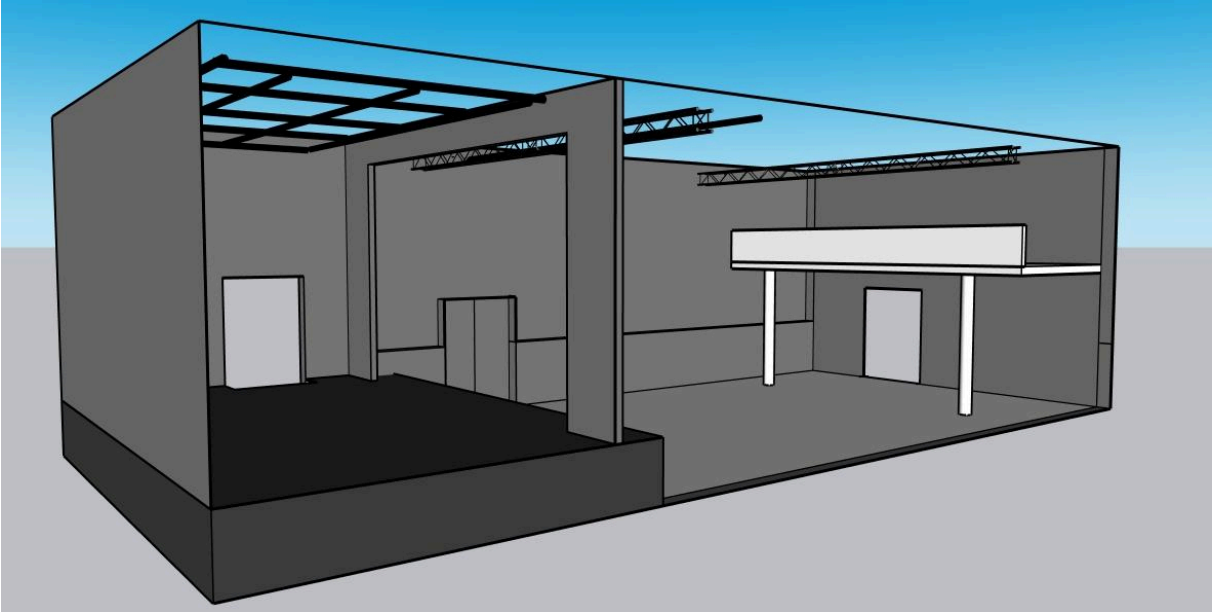
Mixing position on a balcony above the auditorium seats

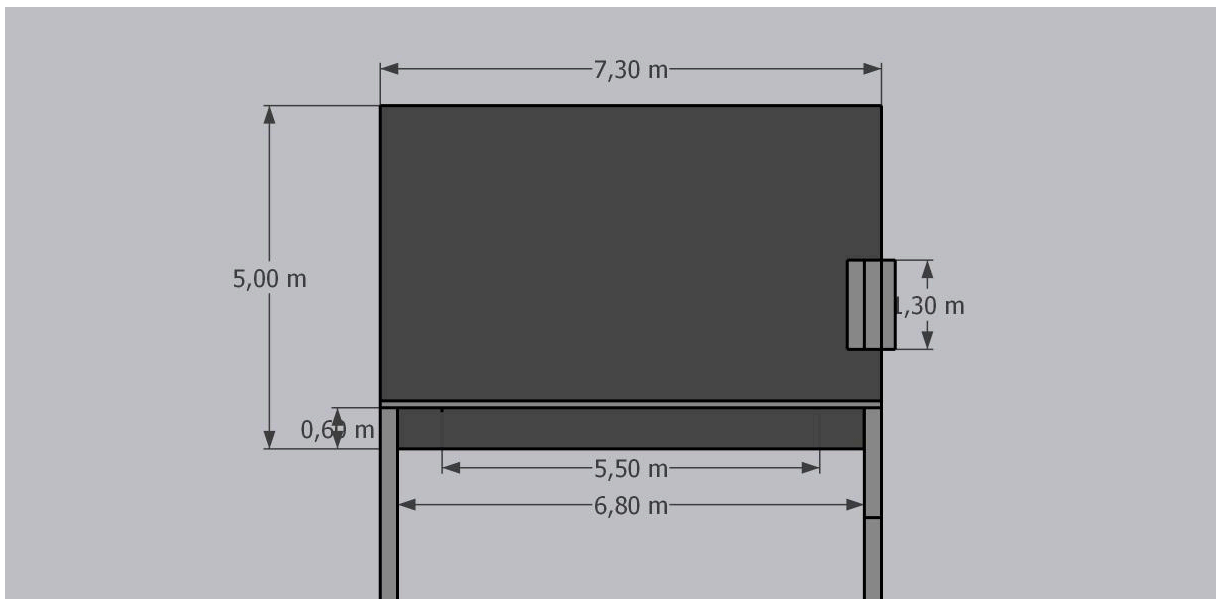
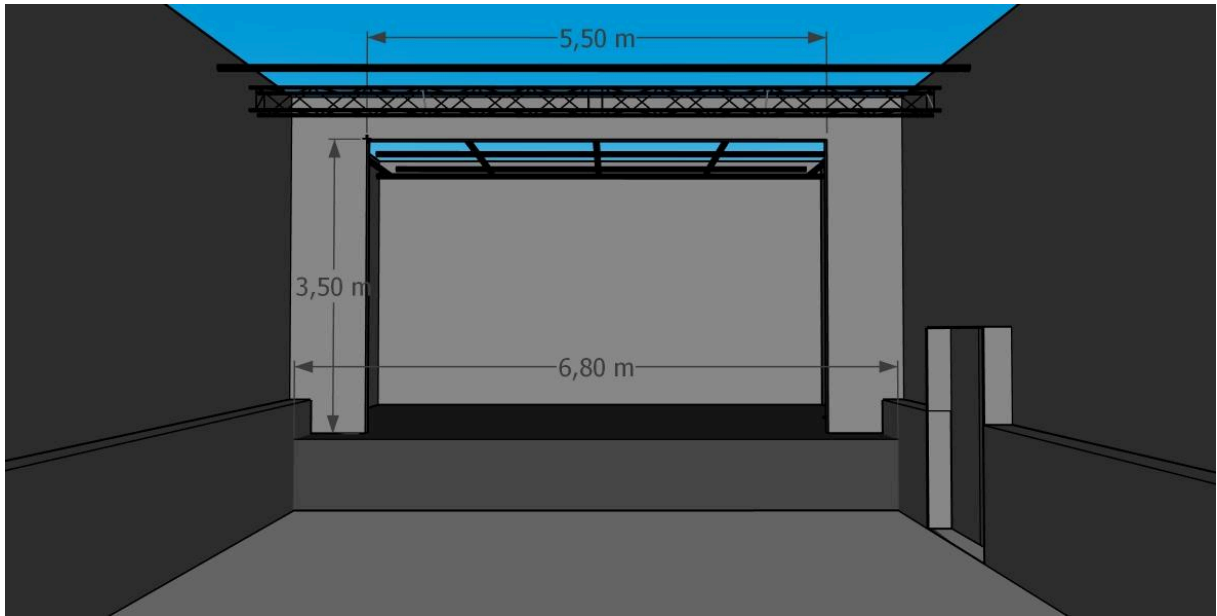
Video equipment:

- Panasonic projector with fix objective

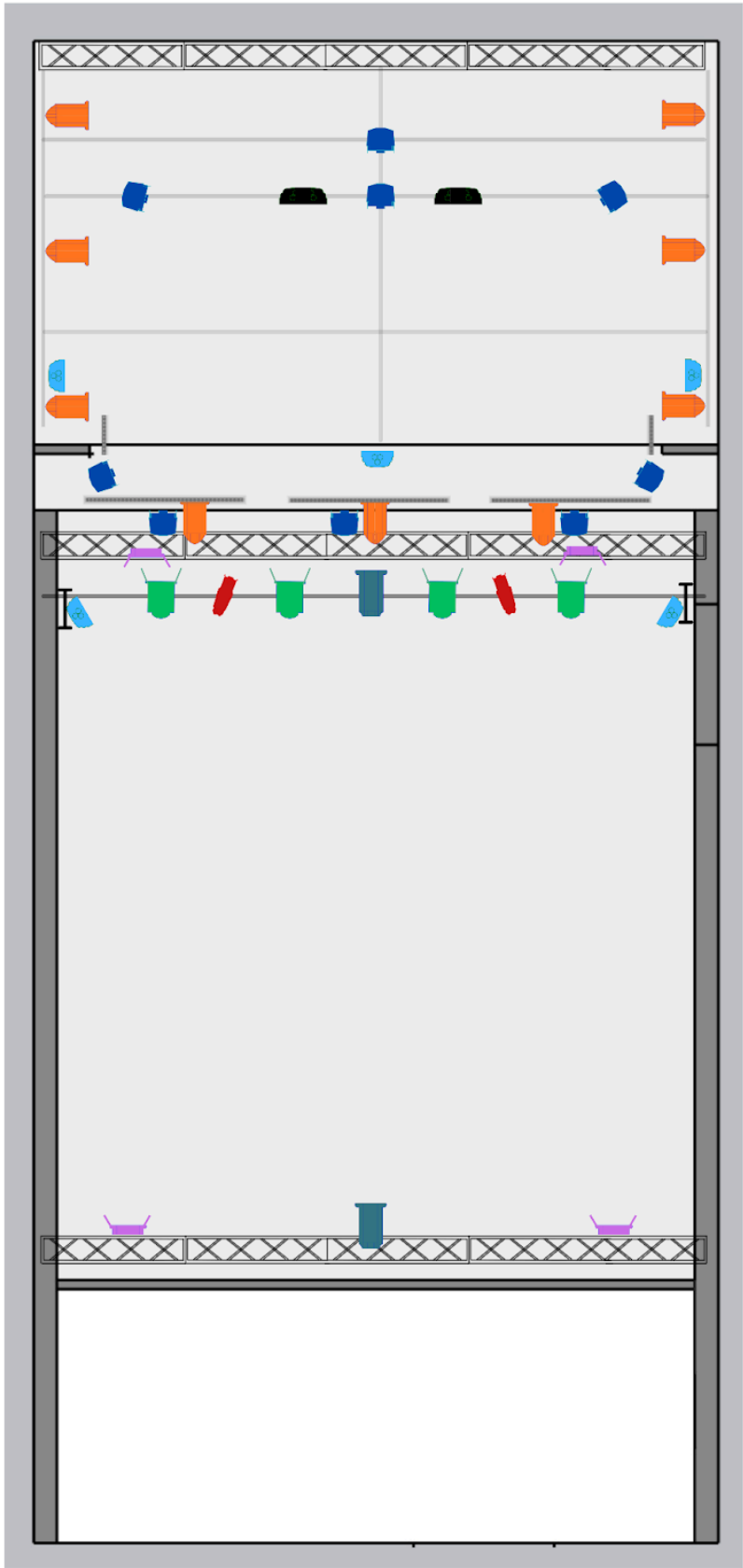
Photos:











-  ADB Profil 550W
-  Led PAR
-  Pc 650W
-  Ignition LED
-  Fresnel 1000W
-  ADB Pc 1000W
-  300W Derit6
-  Ignition Wall I
-  Led Strip WwCw